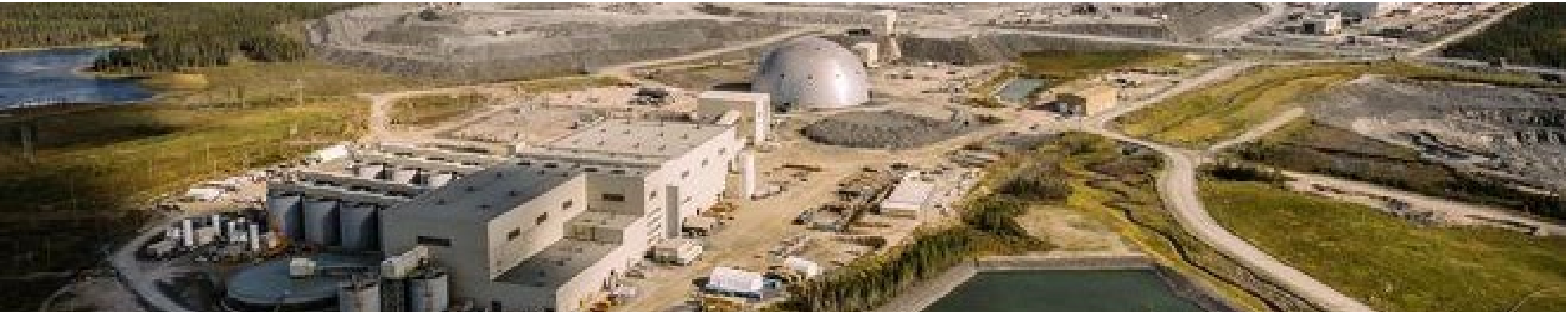


# Open House

Draft Terms of Reference (TOR) for a Long-term  
Waste Management Strategy - Detour Lake Mine



# Outline/Agenda

- Purpose
- Background
- Environmental Assessment (EA) Process
- Terms of Reference (TOR) Process
- Summary of Draft TOR
- Next Steps – Expected Schedule and Consultation
- Open Floor/Questions

# Purpose

- To Introduce the Project
- To provide information on the EA Process
- Consult with the public and obtain feedback on the Draft TOR

# Background

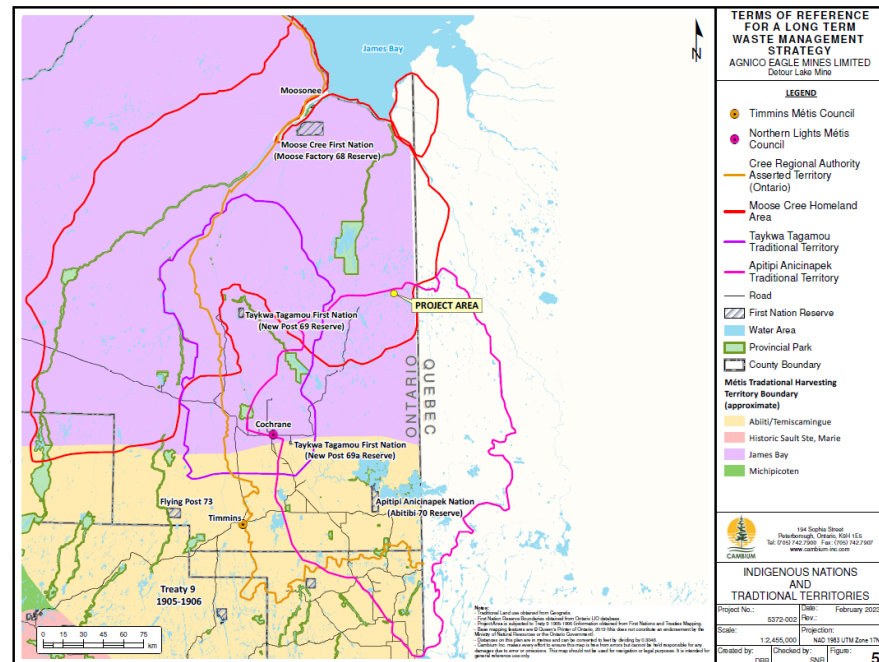
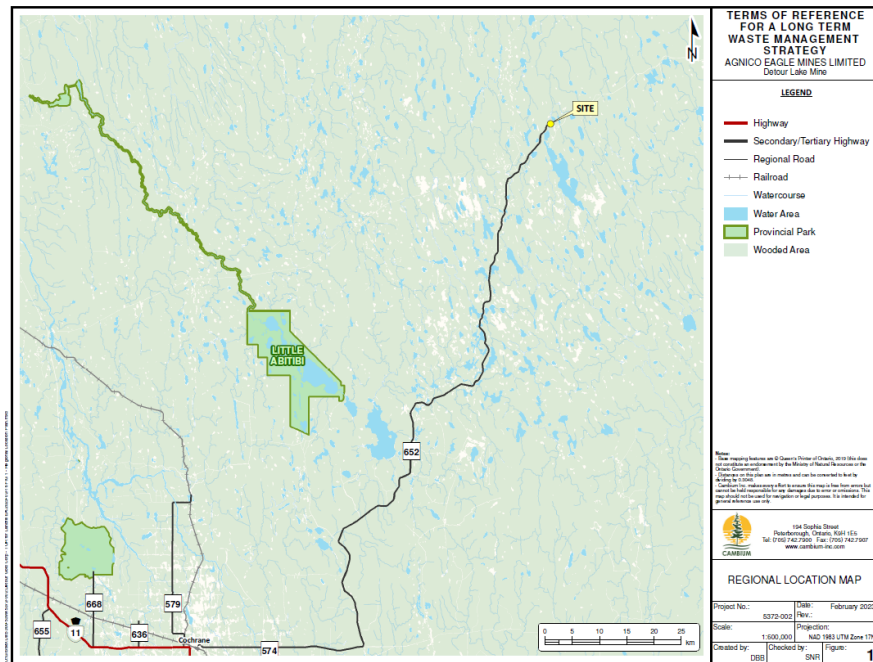
- Detour Lake Mine (DLM) is 185 km northeast of Cochrane via Highway 652
- DLM is situated within the homelands of Indigenous Nations including Moose Cree First Nation (MCFN), Taykwa Tagamou Nation (TTN), and Apitipi Anicinapek Nation (AAN), formerly Wahgoshig First Nation (WFN). These lands are also recognized as being important to the Metis Nation of Ontario as lands they have and continue to use, and by the Cree Nation of Quebec who have asserted Indigenous Rights.



**AGNICO EAGLE**



# Site Location



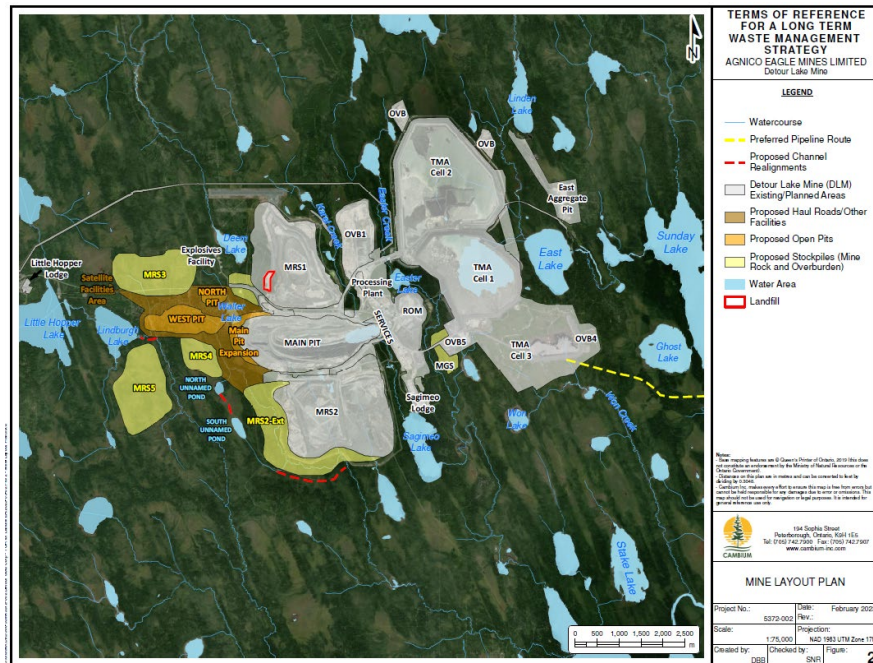
\*\*AAN Territory area will be updated prior to finalization of the TOR

# Background

- DLM is owned and operated by Agnico Eagle Mines Limited, a Canadian company and the third largest gold mining company in the world
- DLM is the largest gold producing mine in Canada
- Cambium is working with Agnico Eagle to obtain environmental approvals for the future waste management needs of the DLM for the Life of Mine, estimated to be at least 30 years



# Mine Layout and Existing Landfill





# Background

- The DLM landfill has 55,000 m<sup>3</sup> of remaining capacity or 8 years (December 2022)
- DLM is expected to be in operations for at least another 30 years
- It is expected at least 150,000 m<sup>3</sup> of non-hazardous solid waste will need to be managed over the 30-year Life of Mine, not accounting for increases in workforce and demolition waste at the time of mine closure



# Background

Agnico Eagle has initiated a study under the Environmental Assessment Act (EAA) to:

- Address the declining capacity of the DLM landfill site
- Identify a long-term strategy for the management of domestic non-hazardous solid waste generated at the DLM

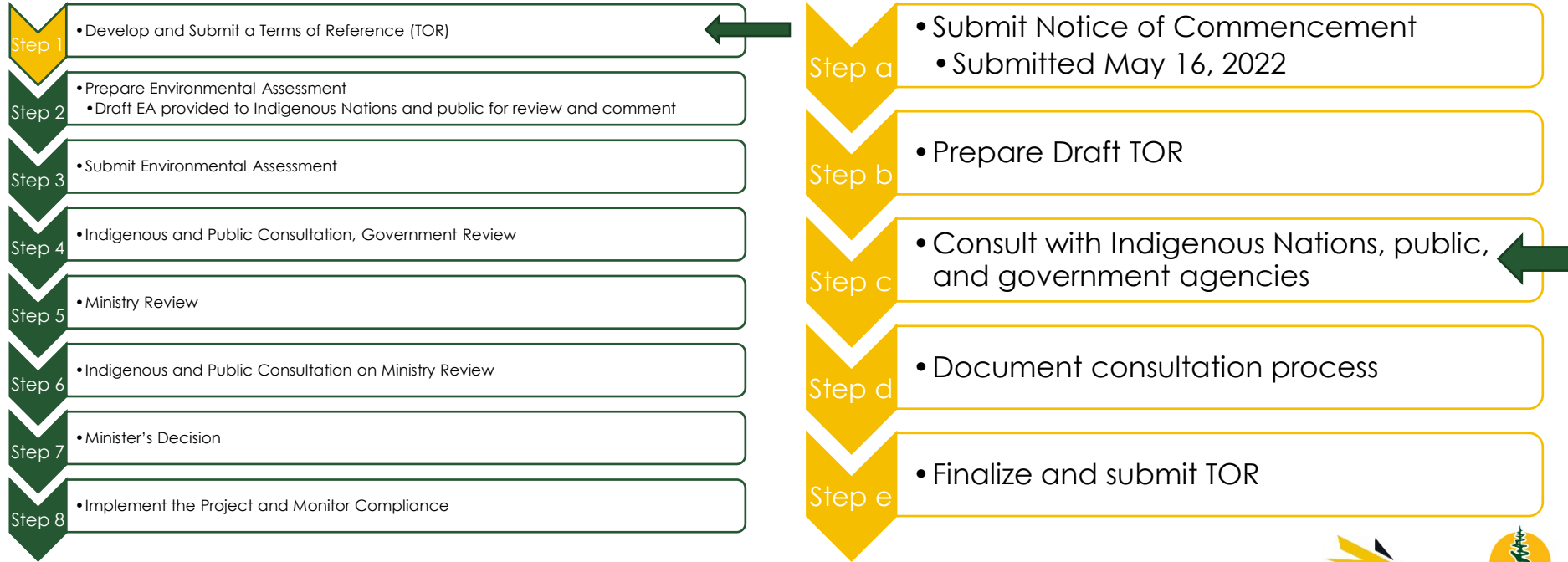
# What is an Environmental Assessment

A regulated process to support decision making by:

- identifying and considering a variety of options to address a need (in this case waste management capacity)
- identifying potential environmental impacts and mitigation measures
- engaging Indigenous Nations and stakeholders (Government Review Team, General Public, Local Businesses, and Land Owners)



# Environmental Assessment Process



# What is a Terms of Reference

- The Terms of Reference outlines how Agnico Eagle will complete the Environmental Assessment
  - Review of available studies, baseline data
  - Identification and rationale for alternatives
  - Preliminary description of environment
  - Identification of Environmental Components and preliminary Indicator Criteria
  - Consultation



# TOR Process



**AGNICO EAGLE**



# DRAFT TOR Contents

1. Introduction – Purpose and Background
2. Environmental Assessment Framework
3. Description of the Rational and Proposed Undertaking
4. Description of the Rational for Alternatives To
5. Description of Existing Environment and Potential Effects
6. Alternative Methods
7. EA Methodology
8. Consultation Plan for the EA
9. Other Approval Requirements
10. Schedule for the TOR
11. Commitments and Monitoring



**AGNICO EAGLE**



# DRAFT TOR - Proposed Undertaking

- The need for Agnico Eagle to continue to provide Detour Lake Mine (DLM) with non-hazardous, solid waste management for the remainder of the Life of Mine, which is estimated to be greater than 30 years.



# DRAFT TOR - Rational for The Undertaking

- Existing landfill does not have sufficient capacity
- At least 150,000 m<sup>3</sup> of non-hazardous solid waste will need to be managed
- Undertaking will consider
  - Climate Change
  - Waste Diversion
  - Source Water Protection
  - Cumulative Effects



**AGNICO EAGLE**



**CAMBIUM**

# DRAFT TOR - Alternatives To the Undertaking

1. Do nothing
2. Increase diversion/waste reduction
3. Establish a new landfill at another location within the DLM site
4. Export waste to a disposal facility elsewhere
5. Expand the existing landfill
6. Implement new or alternative waste management technologies
7. Other alternatives



**AGNICO EAGLE**



# DRAFT TOR - Description of Existing Environment and Potential Effects

Extensive baseline studies have been completed. Where gaps are identified, additional workplans and studies will be completed.

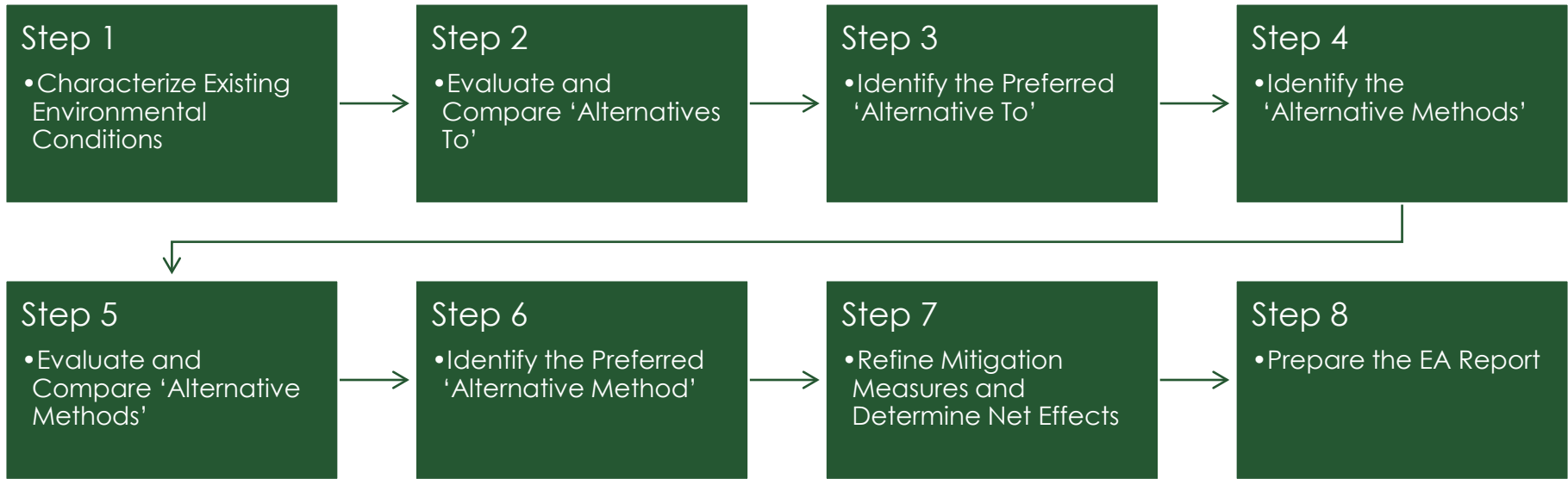
- Natural Components: Atmosphere (air, noise, odour), Geology and Hydrogeology (groundwater quality and quantity), Surface Water (quality and quantity), Biology (aquatic and terrestrial), Climate
- Socio-Economic Components: Land Use, Archaeology and Cultural Heritage, Consideration of Indigenous and Treaty Rights, Effects on Indigenous Nations and Local Communities
- Technical Components: Transportation
- Economic Components: Available financial resources, Effects on Indigenous Nations and Local Communities
- Cumulative Impacts: Effects in combination with existing or planned projects

# DRAFT TOR - Alternative Methods

- The Alternative Methods will be identified and evaluated during EA, once the preferred Alternative To is identified.
  - For example, if preferred alternative is to expand the existing landfill, alternative methods could include vertical expansion, horizontal expansion, mining, etc.
  - Methods will also include technical components such as landfill liners, leachate collection, natural attenuation, etc.



# DRAFT TOR – EA Methodology



**AGNICO EAGLE**



# DRAFT TOR – Consultation Plan

Consultation is an important step in the EA process. Consultation will occur with:

Indigenous Nations:

- Moose Cree First Nation (MCFN)
- Taykwa Tagamou Nation (TTN)
- Apitipi Anicinapek Nation (AAN), formerly Wahgoshig First Nation (WFN)
- Metis Nation of Ontario (MNO)
- Crees of the First Nation of Waskaganish and member Nations of the Grand Council of the Crees (Eeyou Istche) (FNW)

Stakeholders:

- General Public, Local Businesses, and Landowners
- Government Review Team

# DRAFT TOR – Consultation Plan

Consultation Plan includes:

- Objectives for consultation with Indigenous Nations, public stakeholders, and GRT
- Sharing information in plain language as well as technical reports and reviews
- Holding engagement sessions
- Responding to comments
- Document the engagement activities and outcomes



**AGNICO EAGLE**





# DRAFT TOR – Consultation Plan

Milestones for consultation:

- proposed work plans for data collection
- evaluation and assessment of the Alternatives To
- selection of the preferred Alternative To the undertaking
- identified Alternative Methods
- evaluation and assessment of the Alternative Methods
- selection of the preferred Alternative Method
- proposed mitigation and monitoring



AGNICO EAGLE



## Draft TOR – Other Approvals

- Additional approvals will be required through the Environmental Protection Act, Ontario Water Resources Act, Planning Act, Municipal Act

# Draft TOR – Commitments

- Several commitments have been identified in the TOR that will be carried into the EA study report.
- The EA will include information on how the TOR commitments have been addressed in the EA and the location of this information within the EA documents.
- The EA Report will also include a comprehensive list of commitments made by Agnico Eagle during the preparation of the EA studies and during consultation throughout the EA process.

# Draft TOR – Commitments

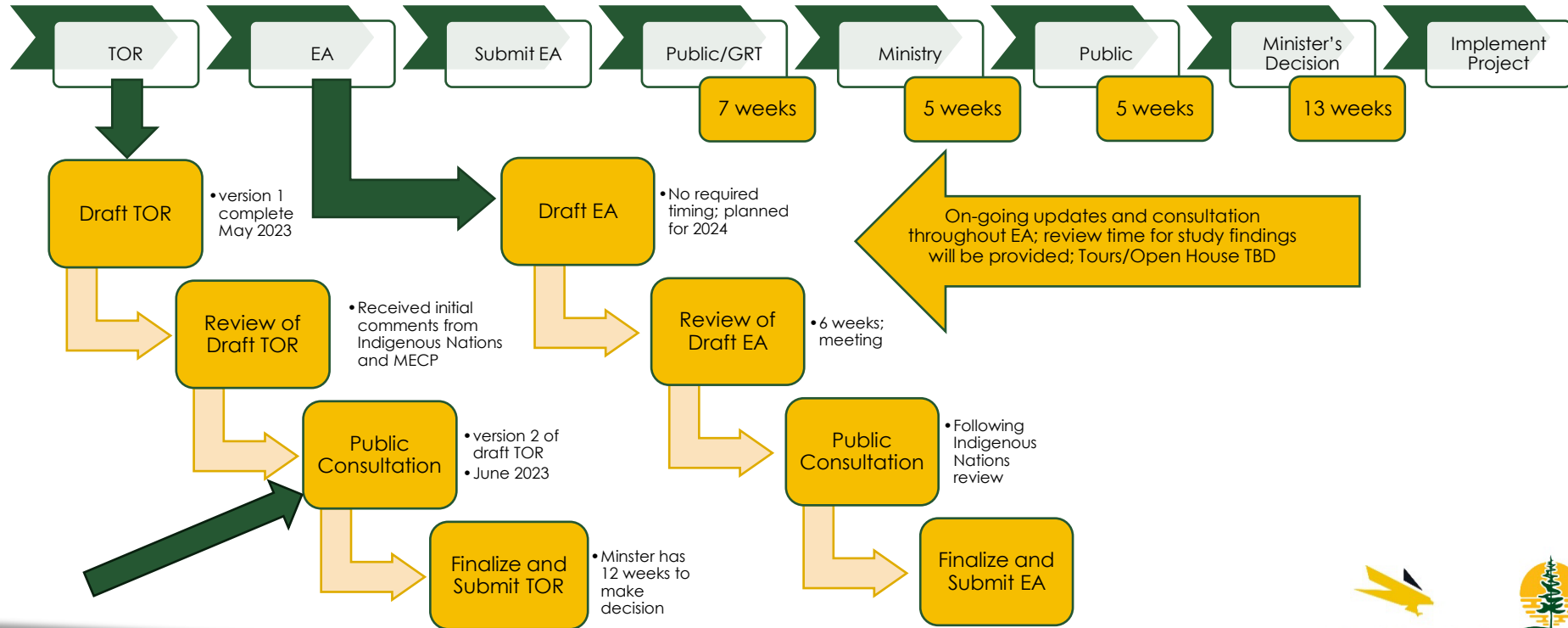
- These commitments include, but are not limited to, the following:
  - All commitments relating to impact management measures (such as mitigation measures)
  - Additional works and studies to be carried out
  - Monitoring
  - Public and Indigenous consultation
  - Contingency planning
  - Documentation and correspondence



**AGNICO EAGLE**



# Next Steps – Expected Schedule and Consultation



# QUESTIONS?

**Stephanie Reeder, P.Geo., C.E.T.**

**Senior Project Manager**

**p:** 705.872.8797

**e:** [stephanie.reeder@cambium-inc.com](mailto:stephanie.reeder@cambium-inc.com)

**w:** cambium-inc.com

